

CITY OF MURRAY CONTROL MONUMENT CARD

DESIGNATION: E3 GPS

TYPE: CONCRETE MONUMENT W/ CITY DISK

DATE SET: JUNE 1997 QUAD: DEXTER, KY.

HORIZONTAL DATUM: NAD-83 VERTICAL DATUM: NAVD-88

STATE: KENTUCKY COUNTY: CALLOWAY ZONE: KY. S 1602

NORTHING: 1764499.14 FT

EASTING: 894716.45 FT

ELEVATION: 446.17 FT (GPS)

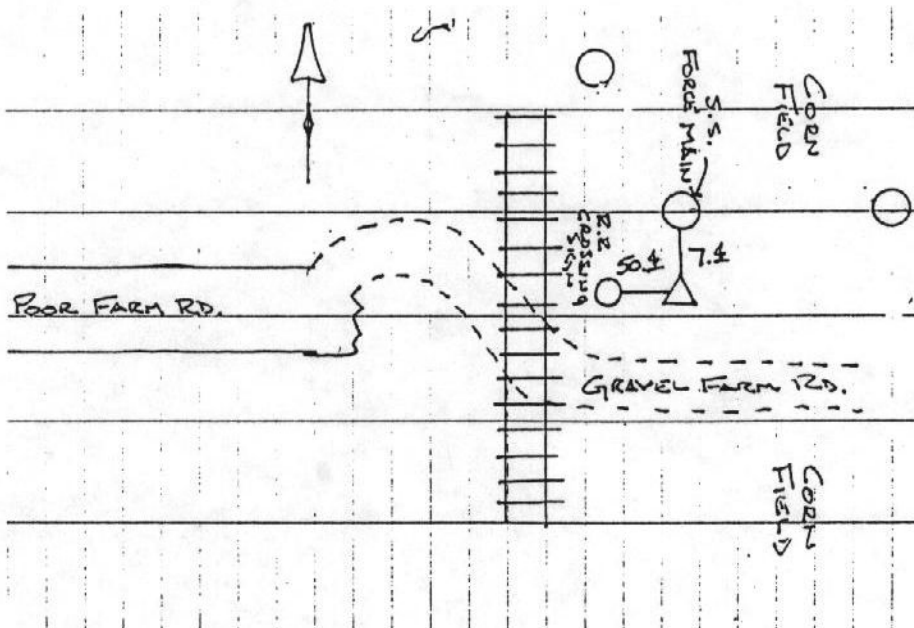
LATITUDE: N 36°38'47.69214" LONGITUDE: W 088°17'31.31672"

SCALE:

CONVERGENCE:

PLANE AZI. TO AZI. MARK:

To Reach: From the intersection of Highway 641 and
Poor Farm Rd. East, go along Poor Farm Rd. East and
across railroad tracks for 0.88 miles to the station
on the left.



NOT TO SCALE

GRW Aerial Surveys, Inc.
801 Corporate Dr. Lexington Ky. 40503
(606)223-3999